

# INNOVATIONS IN **NAFLD CARE** 2022



**WEBINAR** | 19 January 2022

# Program



Dear colleagues,

We are very excited to welcome you to the first **Innovations in NAFLD Care Webinar**, to be held on 19 January 2022.

NAFLD is estimated to affect 25% of the world's population. Given the association between fatty liver disease and the growing global epidemics of obesity and type 2 diabetes, the prevalence of NAFLD is expected to increase further.

This growing burden of disease requires a concerted effort involving multiple stakeholders to identify at risk patients and provide the best care.

Efficient and effective models of care for patients with NAFLD are urgently needed. These models should outline the management of patients across different disease stages and define the cascade of care, from prevention and diagnosis, to treatment.

We have organized this 90-minute introductory webinar to share knowledge from different fields and support the implementation of a multidisciplinary approach using comprehensive models of care for NAFLD.

It will be followed by a workshop in May 2022 where healthcare providers and policymakers will be able to discuss the most comprehensive models of NAFLD care.

Leading experts from around the world will engage you on a range of topics:

- NAFLD-Patient Guidelines
- The Role of Endocrinologists on Screening for NAFLD
- What are the Barriers to Healthy Eating?
- NAFLD from the Patient's and the Clinicians' Perspective
- Outlining Comprehensive Models of Care for NAFLD

Yours sincerely,  
Jeffrey V Lazarus and Jörn M. Schattenberg



**Jeffrey Lazarus,  
PhD, MIH, MA**

Barcelona Institute for  
Global Health (ISGlobal),  
Spain

Program Director



**Jörn Schattenberg,  
MD**

Johannes Gutenberg-  
Universität Mainz,  
Germany

Program Chair



## Certificate of Attendance

Certificates of attendance will be sent by e-mail after completion of the post-meeting survey.

## Feedback

Your feedback is very valuable to us and enables us to further improve this series. After the webinar, a survey will be sent to you via email.

## Networking

The Meeting Hub allows you to connect and communicate with other attendees. Once you have located an attendee you want to connect with, click the Connect button. Once the other attendee accepts your request, you can choose to interact by starting a live chat or live video call. You can also schedule a meeting at a later time, send messages and take notes. Contact information for all attendees you have connected with will be included when you export contacts.

## Notes

You will be able to take notes during the webinar. Any notes that you take throughout the event can be exported by selecting the Export icon in the top right of the screen near your Profile image.

## Social Media

We encourage you to post news and tweet about [##NAFLDCare](#) to your social media accounts as often as you like during the meeting.

You can either post your own tweets to your followers using the hashtag [##NAFLDCare](#) or retweet a message through the official [@Academic\\_MedEdu](#).

## Presentations and webcasts

**ame** Webcasts of the presentations along with the PDF presentations will be available on [www.AcademicMedicalEducation.com](http://www.AcademicMedicalEducation.com) 3 weeks after the webinar. You will be able to watch the presentations on the virtual portal until 3 weeks after the webinar.

## Time Zones

Times are in Central European Time. If you need to convert the times to your timezone, this website might be of interest to you: [www.worldtimebuddy.com](http://www.worldtimebuddy.com)

## Virtual Platform

OnAIR is the virtual platform being used for the Innovations in NAFLD Care Webinar 2022. A video tutorial on how to use the portal can be found [here](#).

## Our Team



**Rikke Puggaard-Rode**  
Project Manager  
[Rikke.Rode@amededu.com](mailto:Rikke.Rode@amededu.com)



**Christina Dammers**  
Senior Project Coordinator  
[Christina@amededu.com](mailto:Christina@amededu.com)

Disclaimer: This workshop aims to offer participants the opportunity to share information. Academic Medical Education cannot accept any liability for the scientific content of the sessions or for any claims which may result from the use of information or publications from this workshop. Academic Medical Education disclaim all liability for injuries or losses of whatever nature incurred by individuals attending the conference.



The **Innovations in NAFLD Care Webinar 2022, Utrecht (Livestream), Netherlands, 19/01/2022-19/01/2022** has been accredited by the European Accreditation Council for Continuing Medical Education (EACCME®) with **1 European CME credits (ECMEC®s)**. Each medical specialist should claim only those hours of credit that he/she actually spent in the educational activity.

Through an agreement between the Union Européenne des Médecins Spécialistes and the American Medical Association, physicians may convert EACCME® credits to an equivalent number of AMA PRA Category 1 Credits™. Information on the process to convert EACCME® credit to AMA credit can be found at [www.ama-assn.org/education/earn-credit-participation-international-activities](http://www.ama-assn.org/education/earn-credit-participation-international-activities).

Live educational activities, occurring outside of Canada, recognised by the UEMS-EACCME® for ECMEC®s are deemed to be Accredited Group Learning Activities (Section 1) as defined by the Maintenance of Certification Program of the Royal College of Physicians and Surgeons of Canada.

You will receive your certificate of attendance with the credit upon completion of the post-meeting survey.



## Wednesday, 19 January 2022

Times are in Central European Time (CET)

### Opening

- 5:00 PM **Opening Words**  
**Jeffrey Lazarus, PhD, MIH, MA**  
Barcelona Institute for Global Health (ISGlobal), Spain  
**Jörn Schattenberg, MD**  
Johannes Gutenberg-Universität Mainz, Germany

### Session 1 *Chairs: Jeffrey Lazarus & Alina M. Allen*

- 5:03 PM **NAFLD-Patient Guidelines; Why Are They Needed and Why Did It Take So Long To Have Them?**  
**Sven M. Francque, MD, PhD**  
Antwerp University Hospital / University of Antwerp, Belgium
- 5:13 PM **Why Endocrinologists Don't Screen for NAFLD as a Complication of Type-2 Diabetes**  
**Kenneth Cusi, MD, FACP, FACE**  
The University of Florida, United States
- 5:27 PM **Healthy Diet vs Overweight/Obesity: Which Are the Barriers to Healthy Eating?**  
**Shira Zelber-Sagi, BSc, RD, PhD**  
University of Haifa / The Tel-Aviv Medical Center, Israel
- 5:38 PM **NAFLD Journey From the Patient Perspectives**  
**Robert Mitchell-Thain**  
Global Liver Institute, United Kingdom
- 5:49 PM **Panel Discussion**

6:05 PM *Short Break*

### Session 2 *Chairs: Jörn Schattenberg & Cyrielle Caussy*

- 6:10 PM **Introductory Lecture: Defining Comprehensive Models of Care for NAFLD**  
**Emmanuel Tsochatzis MD, MSc, FEBTM, FRCP, PhD**  
Royal Free Hospital, United Kingdom
- 6:19 PM **Rountable Discussion**  
**Emmanuel Tsochatzis MD, MSc, FEBTM, FRCP, PhD**  
Royal Free Hospital, United Kingdom
- Sven M. Francque, MD, PhD**  
Antwerp University Hospital / University of Antwerp, Belgium
- Robert Mitchell-Thain**  
Global Liver Institute, United Kingdom
- Kenneth Cusi, MD, FACP, FACE**  
The University of Florida, United States
- Shira Zelber-Sagi, BSc, RD, PhD**  
University of Haifa / The Tel-Aviv Medical Center, Israel

### Closing

- 6:40 PM **Closing Words**  
**Jeffrey Lazarus, PhD, MIH, MA**  
Barcelona Institute for Global Health (ISGlobal), Spain  
**Jörn Schattenberg, MD**  
Johannes Gutenberg-Universität Mainz, Germany



# Faculty

---



SESSION CHAIR  
**ALINA ALLEN,  
MD**

Mayo Clinic Rochester,  
United States

Alina M. Allen is an Assistant Professor of Medicine in the Division of Gastroenterology and Hepatology and the Director of the NAFLD Clinic at Mayo Clinic Rochester, Minnesota. She is an NIH-funded investigator in the field of nonalcoholic fatty liver disease (NAFLD) with clinical expertise in liver diseases before and after liver transplantation. Her research interest includes the development of noninvasive biomarkers for the diagnosis of nonalcoholic steatohepatitis (NASH) and pathways to improve the identification and management of patients with NAFLD. Her research program includes biorepositories/biomarker databases, longitudinal population-based studies of natural history and clinical trials.

She is actively involved in national societies as a member of the NAFLD Special Interest Group within the American Association for the Study of Liver Diseases and as a GRADE methodologist of the Clinical Practice Guideline Committee of the American Gastroenterology Association. She serves as Associate Editor of Hepatology and member of the AASLD Annual Meeting Education Committee.

**Potential conflict of interest:**

Novo Nordisk, Pfizer, Target Pharma, Galmed



SESSION CHAIR  
**CYRIELLE CAUSSY,  
MD, PhD**

Lyon University / Lyon South  
Hospital,  
France

Pr Cyrielle Caussy is a Professor of Nutrition and an Endocrinologist-Diabetologist at Lyon 1 University and Lyon South Hospital in France. She is also the medical director adjunct of the Rhône-Alpes Research Center for Human Nutrition (CRNH Rhône-Alpes) with a strong expertise in conducting clinical research in the Nutrition.

During her medical training, she graduated her PhD at Lyon 1 University studying the epigenetic regulation of plasma triglycerides concentration by microRNAs at the CarMen laboratory (Cardio-Metabolism, Diabetes and Nutrition).

Pr Caussy's main field of research interests are insulin-resistance, obesity and nonalcoholic fatty liver disease (NAFLD). She completed a 2-year advanced research training at the NAFLD Research Center, University of California at San Diego directed by Dr Rohit Loomba.

She now has a specific interest in non-invasive biomarkers and pathophysiology of NAFLD especially in high risk population such as type 2 diabetes and obese patients.

**Potential conflict of interest:**

NovoNordisk, Gilead, AstraZeneca, E-scopics, Bayer, Intercept



INVITED SPEAKER  
**KENNETH CUSI,  
 MD, FACP, FACE**

Malcom Randall VAMC, The University of Florida, United States

Dr. Cusi is a Professor of Medicine and Chief of the Division of Endocrinology, Diabetes and Metabolism at The University of Florida at Gainesville, and at the Veterans Administration Medical Center at Gainesville, FL (2011-present). He completed his early medical training in Buenos Aires, Argentina, and fellowship in endocrinology at Baylor College of Medicine, Houston, Texas.

His earlier career was at the University of San Antonio Health Science Center, Texas (1992-2011) on the role of defects in insulin secretion/insulin resistance in the development of T2DM and the role of nonalcoholic fatty liver disease (NAFLD) and steatohepatitis (NASH) in T2DM. His current work is focused on the underlying mechanisms and new treatments for NAFLD/NASH.

Dr. Cusi has published over 200 original articles, editorials, reviews and book chapters in the fields of diabetes, obesity and liver disease. He has contributed to several guidelines in NAFLD. His basic and clinical research programs in diabetes and fatty liver disease include funding from the NIH and from industry in search of new treatments for NASH.

He received the prestigious Exemplary Teacher Award, as well as the Clinical Research Award for Outstanding Achievement, Research Discovery, and Productivity from The University of Florida (2015).

In 2020, he received the American Association of Clinical Endocrinologists (AACE) Jack Baskin, MD, Endocrine Teaching Award.

**Potential conflict of interest:**

National Institute of Health (NIH), Cirius, Echosens, Inventiva, Novo Nordisk, Poxel, Zydus, Allergan, Altimune, Arrowhead, AstraZeneca, BMS, Boehringer, Ingelheim, Coherus, Eli Lilly, Fractyl, Hanmi, Genentech, Intercept, Janssen, Madrigal, Sonic Incytes Medical Corp and Terns



INVITED SPEAKER  
**SVEN FRANCQUE,  
 MD, PhD**

Antwerp University Hospital, / University of Antwerp, Belgium

Prof. Dr. Sven Francque obtained his MD at the University of Antwerp, Belgium, in 1994 and was subsequently trained in internal medicine and in gastroenterology and hepatology at the Antwerp University Hospital, Belgium and at the Department of Hepatology of the Beaujon hospital, Clichy, France. He has a long-standing interest and expertise in non-alcoholic fatty liver disease and conducted basic research focusing on the vascular changes in steatosis and their contribution to disease progression and leading to his PhD in 2011.

His research unit continues to study pathophysiological mechanisms of NASH. He is also conducting clinical research and his unit is partner in several research consortia supported by the European Commission and by the Innovative Medicines Initiative with a focus on NASH pathophysiology, biomarker research and hepatocellular carcinoma. His clinical trial unit participates from the early days of clinical trials in NASH in many clinical trials in the field.

Prof. Francque is as scientific committee member involved in the design of several phase 2 and current phase 3 trials in NAFLD and is national and international lead PI of several of these trials. He is author/co-author of over 180 papers in peer-reviewed journals and authored several book chapters on NAFLD. He is editor of JHep Reports, the open-access journal of the European Association for the Study of the Liver. He is senior clinical researcher for the Research Fund of the Flemish government.

He is currently chairman of the Department of Gastroenterology and Hepatology of the University Hospital Antwerp and senior full professor of medicine at the Faculty of Medicine and Health Sciences of the University of Antwerp. He is scientific coordinator of the Belgian Week of Gastroenterology, the Belgian national research meeting of all scientific societies in gastroenterology and hepatology in Belgium. He coordinated the Belgian guidelines on NAFLD and more recently, the EASL and EASO-endorsed NAFLD patient guideline.

No potential conflict of interest





PROGRAM DIRECTOR

**JEFFREY LAZARUS,  
PHD, MIH, MA**

Barcelona Institute for  
Global Health (ISGlobal),  
Spain

Jeffrey V. Lazarus (Ph.D., MIH, MA) holds positions as an associate research professor at the Barcelona Institute for Global Health (ISGlobal), Hospital Clínic, University of Barcelona, where he leads the health systems research team, and as Associate Professor at the Faculty of Medicine, University of Barcelona, Spain. His decade-long career as a health systems, HIV and viral hepatitis expert at WHO Europe was followed by three years (2009-2012) as a senior specialist at the Global Fund to Fight AIDS, Tuberculosis, and Malaria, and from 2015 until June 2018 as board chair of the foundation AFEW International.

Prof Lazarus is Vice-Chairman of the board of the EASL International Liver Foundation, a member of the INHSU international education committee and co-chair of the HIV Outcomes Beyond Viral Suppression coalition. He is the author of more than 200 publications and his current scientific work includes leading the Hep C Free Baleares, HBV COMSAVA, and Copenhagen T'n'T projects, the HIV Fourth 90 consensus statement, and the Global NASH Policy study. He is a core member of The Lancet GastroHep Commission on Viral Hepatitis and a commissioner for the EASL-Lancet European Liver Commission.

No potential conflict of interest



INVITED SPEAKER

**ROBERT MITCHELL-THAIN**

Global Liver Institute,  
United Kingdom

Robert Mitchell-Thain, Director of Pediatric and Rare Liver Disease and Director of Patient Insights at Global Liver Institute, and Vice-Chair of Liver Patients International is a patient advocate, of some 20 years' experience, with an international presence.

A NAFLD patient himself, his main focus has been cholestatic liver disease. A member of numerous collaborative committees, lead and co-author on a number of patient-centric abstracts, co-author and reviewer of clinical guidelines and journal articles, he is known for challenging dogma and for a progressive approach to finding solutions in a patient-centred way, pursuing the best for all stakeholders within the community.

A liver patient himself, diagnosed with NAFLD, Robert brings together both the patient experience and the community's knowledge and shared wisdom to advocate on behalf of all the patient community.

No potential conflict of interest



PROGRAM CHAIR

**JÖRN SCHATTEBERG,  
MD**

Johannes  
Gutenberg-Universität Mainz,  
Germany

Jörn M. Schattenberg, M.D. is an Assistant Professor of Medicine at the University Medical Center Mainz, Germany. He received his medical degree in 2002 after studying at the University of Mainz (Germany) and at the Tulane University in New Orleans (US). He completed his postdoctoral training at the Albert-Einstein College of Medicine, New York, where he focused on delineating signaling pathways involved in the pathophysiology of acute and chronic liver injury with a special focus on metabolic liver disease and NASH.

Since 2004 he is a clinical physician and hepatology consultant for in- and out-patients at the University Medical Center Mainz, trained and board-certified in internal medicine and gastroenterology & hepatology and infectious disease. He leads a research laboratory focusing on clinical and experimental aspects of metabolic and toxic liver injury, the development of therapeutic intervention and novel biomarkers in NASH. In 2013 he was appointed Assistant Professor.

He serves as lead and national PI in phase II and III clinical trials in NASH and is a member of the EU-funded H2020 EPOS Program (Elucidating Signaling pathways in NASH) and member of the executive committee of the LITMUS consortium for the validation of biomarkers in NASH.

**Potential conflict of interest:**

Gilead Sciences, Boehringer Ingelheim, Siemens Healthcare GmbH, BMS, Echosens, Genfit, Intercept Pharmaceuticals, Madrigal, Nordic Bioscience, Novartis, Pfizer, Roche, Sanofi, Falk Foundation, MSD Sharp & Dohme GmbH



INVITED SPEAKER

**EMMANUEL TSOCHATZIS,  
MD, MSc, FEBTM,  
FRCP, PhD**

Royal Free Hospital,  
United Kingdom

Dr Emmanuel Tsochatzis (MD, MSc, FEBTM, FRCP, PhD) is an Associate Professor and Consultant Hepatologist at the UCL Institute for Liver and Digestive Health, Royal Free Hospital in London. He is Head of the Centre for Metabolic Liver Disease in ILDH and a member of the EASL Governing Board.

His main research interests include non-alcoholic fatty liver disease, cirrhosis and portal hypertension and non-invasive assessment of liver fibrosis. He is the recipient of the Rising Star in Gastroenterology prize by the UEG and the EASL Physician Scientist Fellowship.

His work on the cost-effectiveness of non-invasive fibrosis tests has informed the World Health Organization (WHO) guidelines on diagnosis and treatment of both HBV and HCV.

He has published more than 200 articles in peer-reviewed journals.

**Potential conflict of interest:**

NovoNordisk, Intercept, Pfizer



INVITED SPEAKER

**SHIRA ZELBER-SAGI,  
BSc, RD, PhD**

University of Haifa / The Tel-  
Aviv Medical Center,  
Israel

Prof. Zelber-Sagi is a clinical dietitian, Epidemiologist and a researcher in nutritional epidemiology. Graduated BSc in nutrition sciences at the Hebrew University. Graduated a PhD in epidemiology and preventive medicine at the Sackler School of Medicine at Tel Aviv University.

Currently, she is an associate Professor and Head of School of Public Health, Faculty of Social Welfare and Health Sciences, University of Haifa. She works as a clinical dietitian at the liver Unit of the Tel-Aviv hospital. She is a member at the “National Committee for Nutrition, Gastroenterology and Liver Disease” and Head of the “Gastroenterology and Hepatology Nutrition forum” on behalf of The Israeli Nutrition Association.

No potential conflict of interest



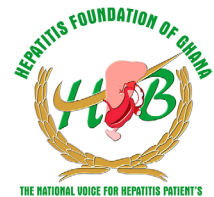
## CONTRIBUTOR LEVEL SUPPORT

# echosens

## MEDIA PARTNERS



## ENDORSERS





We are pleased to announce that the **Innovations in NAFLD Care Workshop** will be held as a hybrid workshop on 6-7 May 2022. Here you can join us either in person in Barcelona, Spain, or virtually from your home or office.

You can register here:

<https://virology.eventsair.com/nafld-workshop-2022/registrations>

For this workshop, **abstract submission** is open!

Abstract Submission Link: <https://virology.eventsair.com/nafld-workshop-2022/abstracts>

Deadline: 25 February 2022

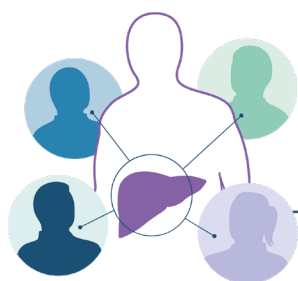
Abstract Categories:

- Epidemiology of NAFLD
- Economic and Clinical Burden of NAFLD
- Patient Identification and Non-Invasive Test for NAFLD
- Multidisciplinary Approaches and Lifestyle Interventions for the Management of NAFLD
- Future Pharmacotherapeutics for NAFLD
- Application of Digital Tools and Artificial Intelligence in NAFLD Care

You can find more details on the workshop website:

[www.academicmedicaleducation.com/meeting/innovations-nafld-care-workshop-2022](http://www.academicmedicaleducation.com/meeting/innovations-nafld-care-workshop-2022)

We look forward to seeing you again!



## INNOVATIONS IN **NAFLD CARE** 2022

HYBRID WORKSHOP | 6-7 May 2022 | BARCELONA, SPAIN

