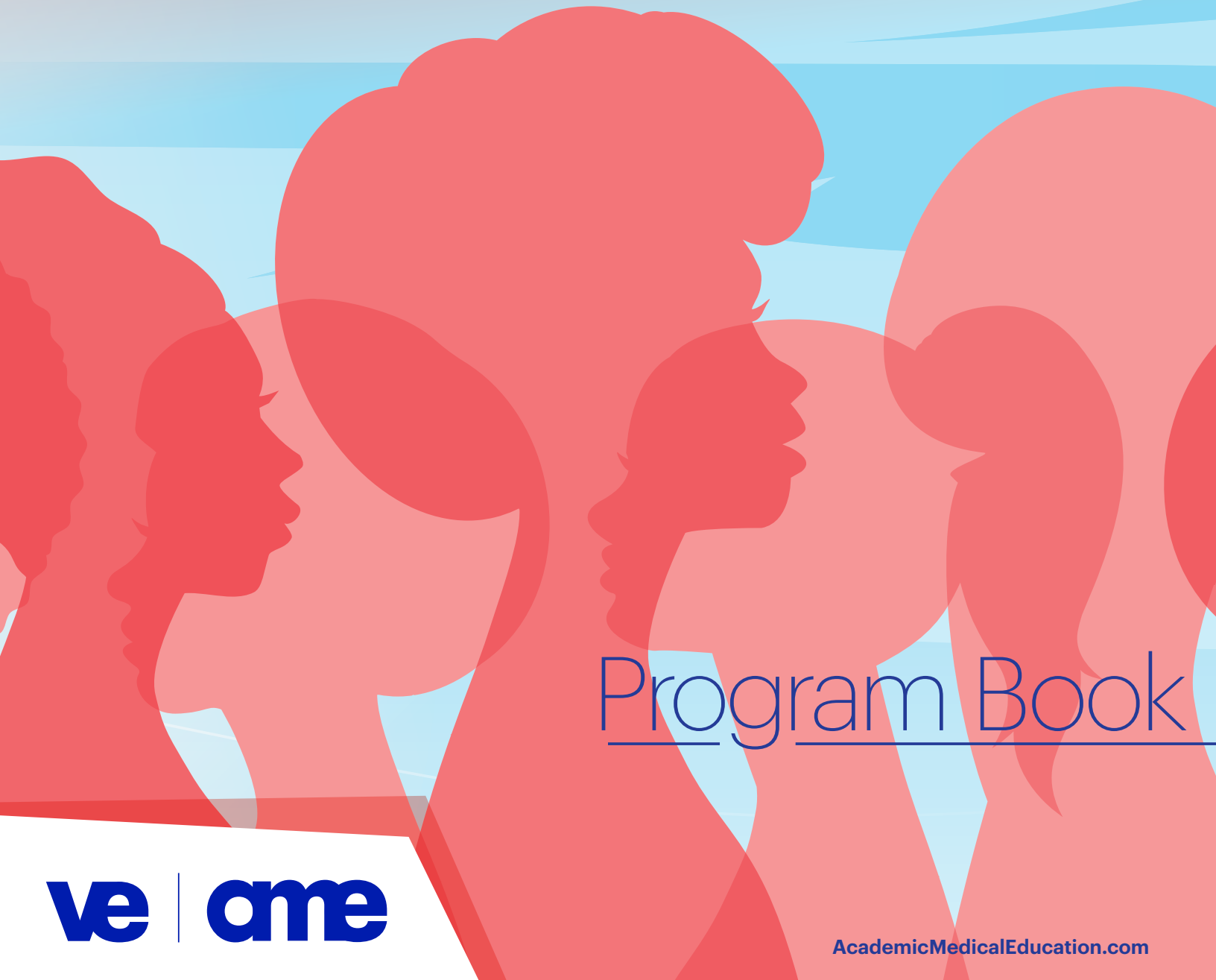




INTERNATIONAL WORKSHOP ON  
**HIV & WOMEN** 2024

FROM ADOLESCENCE TO MENOPAUSE AND BEYOND

**HYBRID | WASHINGTON DC, UNITED STATES | 12-13 APRIL**



Program Book

# About the NIH Office of AIDS Research

For more than 40 years, the HIV epidemic has transformed public health and health research worldwide. The epidemic has evolved from an infectious terminal illness to a preventable and manageable chronic condition through antiretroviral treatment. This progress is due in large part to the groundbreaking research funded and led by the largest biomedical research agency in the world, the National Institutes of Health (NIH) of the U.S. Department of Health and Human Services.

HIV crosses nearly every area of medicine and scientific investigation. The response to the HIV pandemic requires a multi-institute, multidisciplinary, global research program. Within the NIH Office of the Director, the Office of AIDS Research (OAR) ensures that the largest public investment in HIV research in the world is directed at the highest priority areas among the NIH Institutes, Centers, and Offices.

**An unprecedented response to a global pandemic**

***The establishment of NIH OAR was an innovative U.S. federal response to ensure that public funding is invested in high-quality, responsible research. It is the first NIH-wide office dedicated to one specific disease.***

## OAR Activities

In 1988, the U.S. Congress authorized the establishment of the NIH OAR to oversee, coordinate, and manage NIH HIV-related research. OAR—

- Establishes NIH HIV research priorities;
- Allocates HIV and HIV-related research funds in line with scientific priorities;
- Manages HIV research across the NIH Institutes, Centers, and Offices; and
- Collaborates with other U.S. government agencies, community groups, and global organizations to end the HIV pandemic.

## NIH Strategic Plan for HIV and HIV-Related Research

OAR leads efforts across NIH to establish HIV research priorities and develop the NIH Strategic Plan for HIV and HIV-Related Research. This plan guides the largest public investment in HIV research, building on scientific progress and advancing research to end to the HIV pandemic. OAR is currently developing the FY 2026-2030 plan. As part of the process, OAR gathered input from interested constituents, including researchers, health care professionals, advocates and health advocacy organizations, scientific or professional organizations, public health officials, government agencies, and community members. This feedback will help inform the development of the next NIH HIV Strategic Plan to ensure the NIH HIV research program is responsive to the needs of the community.





<b>Welcome</b>	4
<b>Practical Information</b>	6
<b>Organizing Committee</b>	8
<b>Scientific Committee</b>	8
<b>Speakers</b>	9
<b>Program</b>	12
<b>Potential Conflicts of Interest</b>	18
<b>Acknowledgments</b>	19

**We are thrilled to welcome you to the 14th International Workshop on HIV and Women!**

**It is so great that we are once again able to get together in person, but also to offer a hybrid meeting for those unable to travel.**

**We are looking for a special meeting full of interactions, re-acquaintances, and re-engagement in our important task of improving the lives and health of women living with and at risk for HIV.**

Our workshop focuses on a global perspective on treatment and management of women living with HIV - developing a better understanding of different barriers and issues, and helping identify ways to improve the health of women.

Despite women representing more than 50% of the world's population living with HIV, before the creation of this workshop, there were few opportunities to debate and discuss research issues specific to HIV and women. It is incredible how much we have grown over the past 14 years, with abstract submissions and attendee number continuing to grow year by year.

This workshop provides a unique platform for experts involved in research and treatment of women living with HIV to present and discuss the latest developments in the field, and identify treatment strategies for the future.

It is an outstanding opportunity for healthcare providers, researchers, government, industry, and community to discuss, debate, and further their knowledge on the issues related to HIV and women. It is an important forum for early-career investigators to share and receive feedback on their research, and to present to the experts they view as mentors and the inspiration for their work.

Our meeting emphasizes and encourages attendees to learn from each other and experts in the field of HIV and related health, and to dialogue on the issues, gaps, and opportunities for further learning and research.

Many attendees come each year and have formed valuable relationships and partnerships which have led to collaborative projects. The debates and roundtables are an important vehicle to discuss the issues and challenge dogma. Our poster discussions allow further interaction and contributions to each other's work, as well as a forum for early-career investigators to gather feedback on their projects.



There are many current global problems affecting all of us. We will open the conference with two plenary sessions on the impact of global climate crisis on infectious diseases, including HIV, and the implications that war and displacement has had on the management of women living with HIV who are refugees.

Every year there seems to be a new toxicity/comorbidity associated with HIV that remains controversial and an ideal topic for our debates. This year, we are looking at the association between hypertension and antiretroviral therapy. This session is always lively, interactive, and fun - but we all learn lots!

Coinfection with HIV continues to be of concern, and this year we are going to discuss tuberculosis which impacts many women living with HIV around the globe, HPV which can lead to cervical and anal cancer, but with vaccination playing a huge role in prevention, and long COVID - in particular how this impacts women living with HIV.

There are many changes in guidelines with respect to breast/chest feeding for mother/infant pairs and, following our abstract session, our panel will discuss their experiences.

Women are aging with HIV and are at increased risk of comorbidities. We have all learned about the important results of the REPRIEVE study on the role of statins in prevention of cerebral and cardiovascular disease. Excitedly, we have asked the team to come and discuss the women specific learnings from this pivotal study. An expert will also discuss cardiovascular disease in women, and an endocrinologist the role of the new weight reduction therapies in improving metabolic and cardiovascular risk. Other plenaries for aging women will include ways we may integrate care of older women by a geriatrician, and the appropriate use of hormone replacement therapy in menopausal women by a gynecologist.

On behalf of the organizing committee, we look forward to seeing you either in person or virtually, depending on how you've chosen to attend.

**Sharon Walmsley**  
*Workshop Chair*

## Workshop Chair



**Sharon Walmsley,  
CM, MD, FRCPC**  
University Health Network,  
Canada

## Abstracts

Accepted abstracts are published in the International Workshop on HIV & Women 2024 abstract book. Scan the QR-code to see the abstracts.



## Badge Policy

All registered delegates are provided with a workshop badge. Admission to all events is restricted to registered delegates and official guests wearing their name badges. Please wear your badge at all times to ensure admission to the workshop sessions. 25 USD will be charged for replacing a lost badge.

## Certificate of Attendance

Certificates of attendance will be sent by e-mail in the week following the workshop (after completion of the post-workshop survey).

## Code of Conduct

All individuals are required to observe our Code of Conduct. We will not tolerate any form of discrimination, harassment, disrespect, or marginalization of those involved in our programs. Please report any incidents to VE and AME via [info@amededu.com](mailto:info@amededu.com) or to one of our onsite personnel. Any participant who is found to have exhibited any inappropriate conduct or behavior against others may be removed from the program.

View in full:

[academicmedicaleducation.com/  
our-commitment-diversity-and-inclusion](https://academicmedicaleducation.com/our-commitment-diversity-and-inclusion)



## Group Picture

On Friday, 12 April, prior to the lunch break at 12:30 EDT, we will take a group picture. Instructions will be provided in the session before the photo shoot. Please follow directions from the workshop organizers to make this run as smoothly as possible.

## Networking Opportunities

*Friday 12 April - 16:45 EDT* | A welcome reception and guided poster tours are scheduled after the last plenary session. You will also have the option to network with other delegates during the breaks and lunches.

## Workshop Secretariat

The workshop secretariat is located at the registration desk in the pre-function area of the meeting room. It is open throughout the workshop to address all your questions concerning logistics.

## Feedback

Your feedback is very valuable to us as it allows us to continue to improve future international workshops on HIV & women. Please complete the feedback forms that are distributed via email at the end of each workshop day. Your feedback is much appreciated – we will use it to improve the program in 2025.

## Presentations and Webcast

The full session recordings are available OnAIR for three weeks after the workshop. After this time, the lectures and PDF presentations will be made accessible via the workshop website.

**Disclaimer:** This workshop aims to offer participants the opportunity to share information. Virology Education cannot accept any liability for the scientific content of the sessions or for any claims which may result from the use of information or publications from this workshop. Virology Education disclaim all liability for injuries or losses of whatever nature incurred by individuals attending the workshop.



## Posters

Posters are displayed in the Senate Room. Please seek out the posters during refreshment breaks and lunch breaks. There is a dedicated poster viewing session for which we ask the poster presenters to be available to present their work.

*Friday 12 April - 16:45 EDT | Welcome Reception and Guided Poster Tours*

## Presenters

Presenters are requested to submit their presentation as early as possible, latest in the break prior to their session. Our technicians will be available at the technician table.

## Social Media

We encourage you to post news about the International Workshop on HIV & Women 2024 to your social media accounts and tag the **@HIV\_and\_Women** account as often as you like during the workshop. You can post your own tweet to your followers using the hashtag: **#HIVWOMEN**

## WiFi

Free WiFi is available throughout the workshop venue.

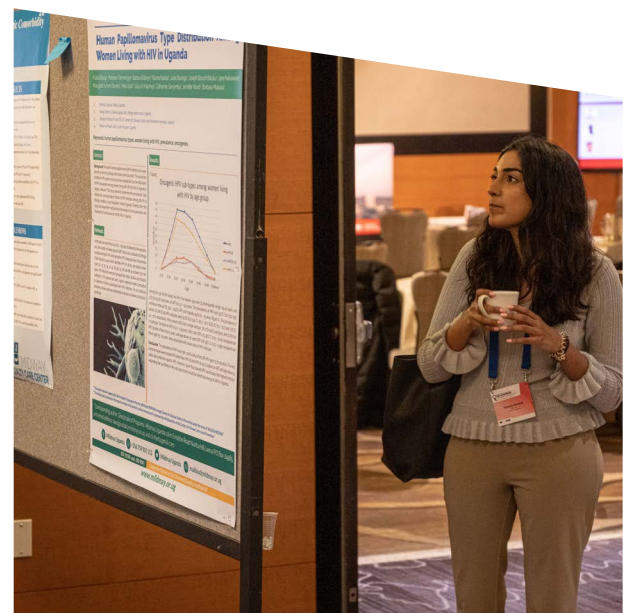
## Virtual Platform

The Virtual Workshop Portal is accessible for all participants and will contain the recordings of all sessions for 3 weeks after the workshop. You will be able to take notes during the workshop. Any notes that you take throughout the event can be exported by selecting the Export icon on the top right side of the screen, near your Profile image.

The Meeting Hub is a tool that allows you to connect and communicate with other attendees. Once you have located an attendee you want to connect with, click the Connect button. Once the other attendee accepts your request, you can interact by starting a live chat or live video call.

## Workshop Secretariat Email

[Christina.Moustakaki@amededu.com](mailto:Christina.Moustakaki@amededu.com)



## Organizing Committee



**Annette Haberl, MD**

Hospital of the Johann Wolfgang Goethe-University Frankfurt, Germany



**Catherine Hankins, MD, PhD, FRCPC, CM**

McGill University, Canada



**Margaret Johnson, MD, FRCP**

Royal Free London NHS Foundation Trust, United Kingdom



**Fungai Murau, MCIM, MA**

Independent Consultant (HIV), United Kingdom



**Angelina Namiba, BA Hons**

4MNetwork of Mentor Mothers, United Kingdom



**Natella Rakhmanina, MD, PhD, FAAP, FCP, AAHIVS**

Children's National Hospital, United States



**Sharon Walmsley, CM, MD, FRCPC**

University Health Network, Canada

## Scientific Committee

**Karoline Aebi-Popp, PD, MD, MSc**  
University Hospital Bern, Switzerland

**Sergii Antoniak, MD**  
Gromashevsky Institute of Epidemiology and Infectious Diseases, National Academy of Medical Sciences of Ukraine, Ukraine

**Dawn Averitt**  
The Well Project/WRI, United States

**Olga Belyaeva**  
Eurasian Network of People who Use Drugs (ENPUD), Ukraine

**Marina Bobkova, MD, PhD**  
Gamaleya Center for Epidemiology and Microbiology, Russian Ministry of Health, Russia

**Claudia Cortes, MD**  
University of Chile, Chile

**Dázon Dixon Diallo, MPH**  
Sister Love, United States

**Mirjam-Colette Kempf, MD, MPH**  
University of Alabama at Birmingham, United States

**Justyna Kowalska, MD, PhD**  
Hospital for Infectious Diseases, Poland

**Allen Kyendikuwa, BA**  
Uganda Youth Coalition on Adolescent SRHR and HIV (CYSRA), Uganda

**Mona Loutfy, MD, FRCPC, MPH**  
Women's College Research Institute (Univ. Toronto), Canada

**Mariana Mardarescu, MD, PhD**  
National Institute for Infectious Diseases "Prof. Dr. Matei Bals", Romania

**Catia Marzolini, PharmD, PhD**  
University Hospital Basel, Switzerland

**Deborah Money, MD, FRCSC**  
University of British Columbia, Canada

**Teresia Otieno**  
Athena Network, United States

**Lena Serghides, PhD**  
University Health Network, Canada

**William R. Short, MD, MPH, FIDSA**  
University of Pennsylvania, United States

**Shema Tariq, PhD, FRCP**  
University College London, United Kingdom

**Patricia Vasquez, MD**  
Hospital San Juan de Dios, Chile

**Marta Vasylyev, MD**  
Astar Medical Center, Ukraine

**Markella Zanni, MD**  
MGH/Harvard Medical School, United States



# Speakers



**Karoline Aebi-Popp,  
PD, MD, MSc**  
University Hospital Bern,  
Switzerland



**Todd Brown,  
MD, PhD**  
Johns Hopkins University,  
United States



**Angela Colbers,  
PhD**  
Radboudumc,  
The Netherlands



**Claudia Cortes,  
MD**  
University of Chile,  
Chile



**Natasha Davies,  
MD**  
Anova Health Institute,  
South Africa



**Lucy Hutchinson**  
The Sussex Beacon,  
United Kingdom



**Judith Kose,  
MD, PhD**  
Africa CDC, Eastern Africa Regional  
Coordinating Centre,  
Kenya



**Sara E. Looby,  
PhD, ANP-BC, FAAN**  
Harvard Medical School / Massachusetts  
General Hospital,  
United States



**Deborah Money,  
MD, FRCSC**  
University of British Columbia,  
Canada



**Kate Nambiar,  
MD, PhD**  
Terrence Higgins Trust,  
United Kingdom



**Angelina Namiba,  
BA Hons**  
4MNetwork of Mentor Mothers,  
United Kingdom



**Chioma Nnaji,  
MEd, MPH**  
Multicultural AIDS Coalition (MAC),  
United States



**Roby Rakhit,  
BSc (1st Class Hons), MBBS, MD,  
FRCP, FESC**  
Royal Free Hospital,  
United Kingdom



**Siegbert Rieg,  
MD**  
University Medical Center Freiburg,  
Germany



**Jürgen Rockstroh,  
MD**  
University of Bonn,  
Germany



**Luxey Sirisegaram,  
MD**  
University Health Network and Sinai Health  
Systems from University of Toronto,  
Canada



**Simiso Sokhela,  
BSc, MBChB, Dip HIV Man**  
Ezintsha, University of the  
Witwatersrand,  
South Africa



**Kimberly Struble,  
PharmD**  
Food and Drug Administration,  
United States





# Program

## Friday, 12 April 2024

Times are in Eastern Daylight Time (EDT)

- 8:30 **Opening of the Workshop**  
**Sharon Walmsley, CM, MD, FRCPC**  
University Health Network, Canada  
**Angelina Namiba, BA Hons**  
4MNetwork of Mentor Mothers, United Kingdom

### Session 1 **Increasing the Burden: Impact of Global Crises on Women Living with HIV**

*Co-Chairs: Sharon Walmsley and Angelina Namiba*

- 8:45 **Overview of the Impact of the Global Climate Change Crisis on Infectious Diseases**  
**Siegbert Rieg, MD**  
University Medical Center Freiburg, Germany
- 9:05 **Refugees/Women Living with HIV on the Move - Implications for Management**  
**Chioma Nnaji, MEd, MPH**  
Multicultural AIDS Coalition (MAC), United States

- 9:25 **Live Q&A** - Discussion with the Audience

### Session 2 **Debate: ART Causes Hypertension in HIV**

*Chair: Catherine Hankins*

- 9:40 **Opening Words**  
**Catherine Hankins, MD, PhD, FRCPC, CM**  
McGill University, Canada
- 9:50 **Voting**
- 9:55 **Healthcare Provider: For the Proposition**  
**Claudia Cortes, MD**  
University of Chile, Chile
- 10:02 **Healthcare Provider: Against the Proposition**  
**Jürgen Rockstroh, MD**  
University of Bonn, Germany
- 10:09 **Community Representative: For the Proposition**  
**Angelina Namiba, BA Hons**  
4MNetwork of Mentor Mothers, United Kingdom
- 10:16 **Community Representative: Against the Proposition**  
**Lucy Hutchinson**  
The Sussex Beacon, United Kingdom
- 10:23 **Discussion with the Audience**
- 10:30 **Rebuttal**
- 10:34 **Voting**
- 10:39 **Results and Closing**
- 10:45 Coffee Break



## NIH/OAR Supported Symposium: Breaking the Barriers to the Prevention and Treatment of HIV among Women

Co-Chairs: *Natella Rakhmanina and Kathleen Powis*

### 11:15 **Opening and Welcome**

**Natella Rakhmanina, MD, PhD, FAAP, FCP, AAHIVS**

Children's National Hospital, United States

**Kathleen Powis, MD**

Harvard Medical School / Massachusetts General Hospital, United States

**Mary Glenshaw, PhD, MPH**

NIH Office of AIDS Research (OAR), United States

### 11:25 **Avoiding Body Weight Bias in Healthcare for Women with HIV**

**Julie Schexnayder**

University of Alabama at Birmingham, United States

### 11:35 **Response**

**Amanda Willig, PhD, RD**

University of Alabama at Birmingham, United States

### 11:40 **Q&A**

### 11:45 **HIV, PrEP Use, and Related Biases among Adolescent Girls and Young Women in South Africa**

**Krishnaveni Surina Reddy, MMedSci**

Wits Reproductive Health and HIV Institute (Wits RHI), South Africa

### 11:55 **Response**

**Christina Psaros, PhD**

Harvard Medical School / Massachusetts General Hospital, United States

### 12:00 **Q&A**

### 12:05 **PrEP Equity for Black Women - A "Dream Deferred" Becoming Reality**

**Latesha Elope, MD, MSPH**

University of Alabama at Birmingham, United States

### 12:15 **Response**

**Abby Charles, MPH**

Institute for Public Health Innovation (IPHI), United States

### 12:20 **Q&A**

### 12:25 **Closing Remarks**

**Natella Rakhmanina, MD, PhD, FAAP, FCP, AAHIVS**

Children's National Hospital, United States

### 12:30 **End of Symposium**

12:30 Lunch Break - Group Photo

## Session 3 HIV and Co-Infections

Co-Chairs: Deborah Money and Natella Rakhmanina

- 13:30 **HIV and TB**  
**Judith Kose, MD, PhD**  
Africa CDC, Eastern Africa Regional Coordinating Centre, Kenya
- 13:50 **HPV and Cervical/Anal Cancer in Women with HIV**  
**Deborah Money, MD, FRCSC**  
University of British Columbia, Canada
- 14:10 **HIV and Long COVID**  
**Simiso Sokhela, BSc, MBChB, Dip HIV Man**  
Ezintsha, University of the Witwatersrand, South Africa

### Abstract-Driven Presentations

- 14:30 **Dynamic Interplay of High-Risk Human Papillomavirus in Women Living with HIV: Persistence, Clearance, Incidence, and Synergies with Human T-lymphotropic Virus-1** #1  
James Kangethe, Kenya
- 14:45 **Seroprevalence and Correlates of Co-infection with HIV and Active Syphilis Among Women in Six Sub-Saharan African Countries: Results From Population-Based HIV Impact Assessments (PHIAs)** #2  
Derrick Bary Abila, Uganda
- 15:00 **Roll Out of Cervical Cancer Screening and Treatment Program; The Ugandan Success Story** #3  
Josephine Ninsiima, Uganda

15:15 **Live Q&A** - Discussion with the Audience

15:30 Coffee Break

## Industry Supported Symposium: People First Language - Why it Matters

Chair: Ama Appiah

- 16:00 **Introduction**  
**Ama Appiah, BSc, MRPharmS**  
ViiV Healthcare, United Kingdom
- 16:05 **What Is People-First Language, Why Does It Matter, and What Does It Mean for the HIV Community?**  
**Yvonne Gilleece, MB, BCh, BAO**  
Brighton & Sussex Medical School / University Hospitals Sussex NHS Foundation Trust, United Kingdom  
**Angelina Namiba, BA Hons**  
4MNetwork of Mentor Mothers, United Kingdom  
**Marvelous Muchenje, BSW, MSc, PhD**  
ViiV Healthcare, Canada
- 16:30 **Panel Discussion and Q&A**
- 16:40 **Call to Action and Close**
- 16:45 **End of Symposium**  
NP-GBL-HVX-BKLT-240003 | April 2024 This is a non-promotional meeting with no mention of products.  
To report an adverse event, please use: <https://www.gsk.com/en-gb/contact-us/report-a-possible-side-effect>



16:45 **Welcome Reception and Guided Poster Tours (3 Parallel Sessions)**

**Guided Poster Tour 1: Reaching Out**

*Moderator: Lena Serghides*

**Flourishing with HIV: A Roadmap for Women and Girls** #14  
Ciarra Covin, United States

**Clinic-Based HIV Identification and Prevention in Cisgender Women Using Electronic Resources (CHIPPER): A Hybrid Type II Implementation/Effectiveness Trial** #15  
Crystal Christie, United States

**Co-designing a Peer-Led Mhealth Intervention (“TwySHE”) to Prevent HIV and Unintended Pregnancy among Female Students in Zambia: Findings From Participatory Human Centered Design Workshops** #16  
Karen Hampanda, United States

**Guided Poster Tour 2: EMPOWER**

*Moderator: Mona Loufty*

**Exploring Trauma Healing Preferences: Findings from the Trauma- and Violence-Aware Care (TVAC) Mixed Methods Survey** #20  
Logan Kennedy, Canada

**Influences of Gender-Based Stigma on HIV Prevention and Care among Older Women** #22  
Thi Vu, United States

**PrEP Uptake in Cisgender Females at Risk for HIV in South Florida** #45  
Jennifer Kuretski, United States

**State-Level Barriers and Facilitators for Implementing PrEP Services in Title X Family Planning Clinics** #47  
Madelyn Carlson, United States

**Awareness and Acceptability of HIV Pre-exposure Prophylaxis among HIV-Negative Pregnant and Breastfeeding Women in Zambia: Analysis of ZAMPHIA 2021** #70  
Wantula Sichembe, Zambia

**Guided Poster Tour 3: ART Treatment and Care**

*Moderator: William R. Short*

**Toxicity-Associated Discontinuations of Dolutegravir-and Bictegravir-Based Antiretroviral Treatment Regimens in Females Compared to Males: A Systematic Review and Meta-Analysis** #24  
Zhou Fang, Canada

**Accumulating Safety Data for Antiretroviral Therapy In Pregnancy: Increasing reporting to the Antiretroviral Pregnancy Registry** #25  
Sushena Krishnaswamy, Australia

**Socio-Economic Inequalities in the Coverage of Cervical Cancer Screening Among Women Living with HIV and Those Not Living with HIV in Five Sub-Saharan African Countries** #75  
Derrick Bary Abila, Uganda

**Distribution of Vaccine-preventable HR-HPV Genotypes and Association with Cervical Cytology Patterns among Women Living with HIV at Kenya’s Referral Hospital** #97  
James Kangethe, Kenya

17:45 **End of First Workshop Day**

## Saturday, 13 April 2024

Times are in Eastern Daylight Time (EDT)

### Session 4 Pregnancy and Breastfeeding

Co-Chairs: Angelina Namiba and Annette Haberl

- 8:30 **Infant Feeding Choices for Parents Living with HIV: Updates From the INFORM+ Forum Group**  
**Natasha Davies, MD**  
Anova Health Institute, South Africa
- 8:50 **Update on Use of Antiretrovirals in Pregnancy**  
**Angela Colbers, PhD**  
Radboudumc, The Netherlands

#### Abstract-Driven Presentations

- 9:10 **Case Series of Women with HIV Who Breastfed** #4  
William Short, United States
- 9:25 **Risk Factors for Preterm Birth in Pregnant Women Living with HIV: A 25-Year Analysis of the British Columbia Perinatal HIV Database** #5  
Jeffrey Man Hay Wong, Canada
- 9:40 **Birth Defects Following Dolutegravir Transition among Women Delivering at Surveillance Sites in Eswatini** #6  
Philisiwe Ntombenhle Khumalo, Swaziland
- 9:55 **The Health Outcomes Around Pregnancy and Exposure to HIV/ARVs (HOPE) Study: A Prospective Cohort of Reproductive-Aged Women Living with HIV** #7  
Deborah Kacanek, United States

10:10 **Panel Discussion: Experience from Women Living with HIV (Breastfeeding) and Caregivers**

10:30 Coffee Break

### Session 5 Where Do We Stand: Women Aging with HIV - from Research to Service Delivery

Co-Chairs: Lena Serghides and Margaret Johnson

- 11:00 **Participation of Women in Clinical Trials (Incl. Sex Differences in Efficacy and Safety Outcomes)**  
**Kimberly Struble, PharmD**  
Food and Drug Administration, United States
- 11:20 **Service Delivery for Women Aging with HIV**  
**Luxey Sirisegaram, MD**  
University Health Network and Sinai Health Systems from University of Toronto, Canada
- 11:40 **Cardiovascular Risk for Women - Data from the REPRIEVE Study**  
**Sara E. Looby, PhD, ANP-BC, FAAN**  
Harvard Medical School / Massachusetts General Hospital, United States
- 12:00 **Overview of Cardiovascular Diseases in Women**  
**Roby Rakhit, BSc (1st Class Hons), MBBS, MD, FRCP, FESC**  
Royal Free Hospital, United Kingdom

#### Abstract-Driven Presentations

- 12:20 **The CD38-NAD+ Axis Mediates a Hyperinflammatory State in WLWH** #8  
Poonam Mathur, United States





12:35 **Sex Disparities in Geriatric Syndromes among People 50 Years or Older Receiving Care For HIV Infection in Mexico (2012-2017)** #9  
Yanink Caro-Vega, Mexico

12:50 **Live Q&A** - Discussion with the Audience

13:05 Lunch Break

**Session 6 Abstract-Driven Presentations: Strategies for Prevention**

*Co-Chairs: Angelina Namiba and Claudia Cortes*

14:05 **Antiretroviral Therapy Adherence Strategies for Women with HIV in the Postpartum Period** #10  
Florence Momplaisir, United States

14:20 **EmpowerHER: Black Women's Reasons for HIV Prevention** #11  
Dana Williams, Canada

14:35 **HIV Sero-Conversions Among Adolescent Girl and Young Female Dapivirine Vaginal Ring (DPV-R) Users: Early Learnings From a Demonstration Project in Zimbabwe** #12  
Jabulani Mavudze, Zimbabwe

14:50 **Factors Associated with Unawareness of HIV Status and Recency of HIV Infections among Women Living with HIV: Findings from a Population-Based Survey in Thirteen African Countries** #13  
Irene Mbabazi, Uganda

15:05 **Live Q&A** - Discussion with the Audience

**Session 7 Comorbidities and Women**

*Co-Chairs: Mona Loutfy and Fungai Murau*

15:20 **Appropriate Use of Hormonal Replacement Therapy During Menopause**  
**Karoline Aebi-Popp, PD, MD, MSc**  
University Hospital Bern, Switzerland

15:40 **Metabolic Complications - The Role of the New Weight Reduction Therapies**  
**Todd Brown, MD, PhD**  
Johns Hopkins University, United States

16:00 **Comorbidities in Trans Women**  
**Kate Nambiar, MD, PhD**  
Terrence Higgins Trust, United Kingdom

16:20 **Q&A**

16:35 **Closing Remarks**  
**Sharon Walmsley, CM, MD, FRCPC**  
University Health Network, Canada  
**Fungai Murau, MCIM, MA**  
Independent Consultant (HIV), United Kingdom

16:40 **End of the Workshop**

# Potential Conflicts of Interest

**Karoline Aebi-Popp, PD, MD, MSc**

Potential conflicts of interest: ViiV Healthcare, Gilead Sciences Inc., MSD

**Todd Brown, MD, PhD**

Potential conflict: Merck, ViiV Healthcare, Janssen

**Abby Charles, MPH**

Potential conflict: Gilead Sciences Inc.

**Angela Colbers, PhD**

Potential conflict: ViiV Healthcare, Gilead Sciences Inc., Merck

**Claudia Cortes, MD**

Potential conflicts of interest: ViiV Healthcare, Merck, Janssen, Pfizer

**Natasha Davies, MD**

No potential conflict of interest to disclose

**Latesha Elope, MD, MSPH**

Potential conflicts of interest: Merck, NIH/NIMH/NICHD; MediQ, Clinical Care Options, Practice Point

**Annette Haberl, MD**

No potential conflict of interest to disclose

**Catherine Hankins, MD, PhD, FRCPC, CM**

No potential conflict of interest to disclose

**Lucy Hutchinson**

No potential conflict of interest to disclose

**Margaret Johnson, MD, FRCP**

No potential conflict of interest to disclose

**Judith Kose, MD, PhD**

No potential conflict of interest to disclose

**Sara E. Looby, PhD, ANP-BC, FAAN**

No potential conflict of interest to disclose

**Mona Loutfy, MD, FRCPC, MPH**

Potential conflicts of interest: Merck, ViiV Healthcare, Gilead Sciences

**Deborah Money, MD, FRCSC**

Potential conflicts of interest: Merck

**Fungai Murau, MCIM, MA**

No potential conflict of interest to disclose

**Kate Nambiar, MD, PhD**

No potential conflict of interest to disclose

**Angelina Namiba, BA Hons**

Potential conflicts of interest: ViiV Healthcare

**Chioma Nnaji, MEd, MPH**

No potential conflict of interest to disclose

**Kathleen Powis, MD**

No potential conflict of interest to disclose

**Christina Psaros, PhD**

No potential conflict of interest to disclose

**Roby Rakhit, BSc (1st Class Hons), MBBS, MD, FRCP, FESC**

No potential conflict of interest to disclose

**Natella Rakhmanina, MD, PhD, FAAP, FCP, AAHIVS**

Potential conflicts of interest: ViiV Healthcare

**Krishnaveni Surina Reddy, MMedSci**

No potential conflict of interest to disclose

**Siegbert Rieg, MD**

No potential conflict of interest to disclose

**Jürgen Rockstroh, MD**

Potential conflicts of interest: Abbvie, Boehringer, Gilead Sciences Inc., Merck, MSD, Janssen and ViiV Healthcare

**Julie Schexnayder**

No potential conflict of interest to disclose

**Lena Serghides, PhD**

No potential conflict of interest to disclose

**Julie Schexnayder**

No potential conflict of interest to disclose

**William R. Short, MD, MPH, FIDSA**

Potential conflicts of interest: Gilead Sciences Inc., ViiV Healthcare

**Luxey Sirisegaram, MD**

No potential conflict of interest to disclose

**Simiso Sokhela, BSc, MBChB, Dip HIV Man**

Potential conflicts of interest: Unitaid, BMGF, Merck, Johnson

**Kimberly Struble, PharmD**

No potential conflict of interest to disclose

**Sharon Walmsley, CM, MD, FRCPC**

Potential conflicts of interest: Merck, ViiV Healthcare, GSK, Gilead Sciences Inc.

**Amanda Willig, PhD, RD**

Potential conflicts: Weight Watchers (WW) International, Personal company: TW Education



## Corporate support

### TITANIUM LEVEL

---



**National Institutes of Health**  
*Office of AIDS Research*

### GOLD LEVEL

---



### SILVER LEVEL

---



**GILEAD**



**MSD**

### SCHOLARSHIPS SUPPORTER

---



**CIHR IRSC**

 Canadian Institutes of Health Research | Instituts de recherche en santé du Canada

# Acknowledgments

## ENDORSERS



## PEOPLE FIRST LANGUAGE - WHY IT'S IMPORTANT



## Words matter. It's time to put people before labels

Join us for an engaging panel discussion with insightful community perspectives on the power of words in promoting inclusivity while tackling stigma and discrimination in HIV

Change starts with how we speak. Empower each other to make a difference, one word at a time



Friday  
12 April 2024



16:00–16:45  
EDT

This is a non-promotional meeting with no mention of products.  
To report an adverse event, please use:  
<https://www.gsk.com/en-gb/contact-us/report-a-possible-side-effect>















NIH Office of AIDS Research and  
Office of Research on Women's Health

# HIV and Women Signature Program



Despite tremendous advances in HIV research over the last 40 years, women—particularly women of color, young women, and transgender women—remain disproportionately affected by HIV.<sup>1,2</sup> Further research is critical to understanding optimal ways to prevent, treat, and cure HIV and associated comorbidities across women's lifespans. Prioritizing the inclusion of diverse populations of women in prevention, treatment, and cure-related research efforts is an essential component of ending the HIV epidemic.

The HIV and Women Signature Program, a joint program of the National Institutes of Health (NIH) Office of AIDS Research (OAR) and Office of Research on Women's Health (ORWH), advances the NIH vision for women's health, a world in which all women, girls, and gender-diverse people receive evidence-based care, prevention, and treatment tailored to their unique needs, circumstances, and goals. The cornerstone

of the program is an intersectional, equity-informed, data-driven approach to research on HIV and women. In addition, the program supports women in science careers to meet their full professional potential.

Scan the QR code to learn more about the HIV and Women Signature Program.



## Recent Highlights

### ***The Lancet HIV* Highlights HIV and Women Signature Program at NIH**

A new position paper, published February 26 in *The Lancet HIV*, outlines a framework for an intersectional, equity-informed, data-driven approach to research on HIV and women, the cornerstone of the HIV and Women Signature Program. Scan the QR code above to learn more.

### **NIH HIV & Women Scientific Workshop: Centering the Health of Women in HIV Research**

This two-day virtual workshop held March 21-22, 2024, reviewed the state of science on HIV and women to inform the NIH HIV research agenda. The workshop featured a diverse array of topics of relevance to women, girls, and gender-diverse people. Scan the QR code above to learn more, and read an OAR Director's Blog about the event.

1. UN Women. HIV and AIDS.

2. UNAIDS. Global HIV & AIDS Statistics—Fact Sheet.



**ame**  
academic  
medical education

[AcademicMedicalEducation.com](http://AcademicMedicalEducation.com)